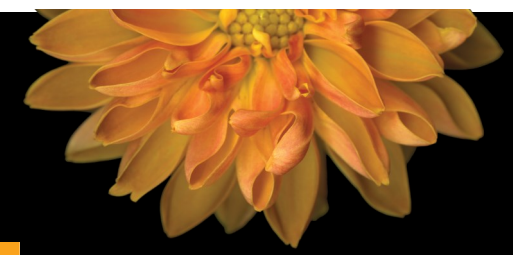




AUGUST SPECIALTY CARE CALENDAR



THE WATERS
OF PLYMOUTH

SUNDAY	MONDAY	TUESDAY	WEDNESDAY	THURSDAY	FRIDAY	SATURDAY
<p>Calendar Key: First Floor L = Lobby BP = Back Patio BL = Back Lobby DC = Dahlia Café (Bistro) WBS = Wellbeing Studio P= Ponds</p> <p>Second Floor CR = Community Room CAS = Creative Arts Studio M= Marsh</p> <p>RR-Registration Required</p>	<p>1</p> <p>Morning Coffee Talk (M) Rise and Thrive– Updates (P) 10:45 Virtual Mass (WBS) Great Courses (M)</p> <p>Afternoon Water-coloring (P) 2:30pm Coffee, Cookies and Conversation (BP)</p> <p>Evening Documentary</p>	<p>2 Happy Birthday Margaret R!</p> <p>Morning Music and Movement (P) Crosswords (M) Sing-A-Longs (P)</p> <p>Afternoon Q-Tip Painting (P) National Night Out-Ice Cream on the Patio Coffee Talk (M)</p> <p>Evening 4:30pm Bingo (M) Book Club (P)</p>	<p>3</p> <p>Morning Rise and Thrive– Bags (P) Billiards (M) Manicures and Hand Massages (M&P)</p> <p>Afternoon 1pm Rosary (WBS) 1:30 Paint, Paper, Scissors (CAS) 2pm Men’s Club (BP)</p> <p>Evening Movie Night</p>	<p>4</p> <p>Morning Coffee Talk (M) 10:45am All Resident Meeting (CR) 11am Music Therapy (P)</p> <p>Afternoon Social Hour– Picnic Month 3pm Devotions (PDR)</p> <p>Evening Classic TV</p>	<p>5</p> <p>Morning Rise and Thrive– Drumming (P) Fill Your Vase and Flower Arranging (M&P)</p> <p>Afternoon 2pm Music with Elvis (BP) Coffee Talk (M)</p> <p>Evening Documentaries</p>	<p>6</p> <p>Morning Current Events 10:30 Second Hand Hounds (P) 11am Second Hand Hounds (M)</p> <p>Afternoon This Day in History 2pm Movie</p> <p>Evening Puzzles</p>
<p>7</p> <p>Morning Virtual Church Service Daily Chronicle This Day in History</p> <p>Afternoon Hymn Sing with Spiritual Eldercare</p>	<p>8</p> <p>Morning Coffee Talk (M) Rise and Thrive– Updates (P) 10:45 Virtual Mass (WBS)</p> <p>Afternoon 1:30pm Hymn Sing with Pat Coffee and cookies to follow (CR) 3:30pm Gerta the Great Dane visits (P&M)</p> <p>Evening Documentary</p>	<p>9</p> <p>Morning Music and Movement (P) Crosswords (M) Pascal the Dog visits (M&P) Sing-A-Longs (P)</p> <p>Afternoon Birdseed Ornaments (P) Picture Frames (M) Coffee Talk (P&M)</p> <p>Evening 4:30pm Bingo (M) Book Club (P)</p>	<p>10</p> <p>Morning Coffee Talk Outing: Arboretum</p> <p>Afternoon 1pm Rosary (WBS) Carnival Games (M&P)</p> <p>Evening Movie Night</p>	<p>11 Happy Birthday Wally!</p> <p>Morning Coffee Talk (M) Rise and Thrive-Drumming (P) Card Games (P)</p> <p>Afternoon Social Hour– World Elephant Day (DC) 3pm Devotions (PDR)</p> <p>Evening Classic TV</p>	<p>12 Happy Birthday Dolores D!</p> <p>Morning 10:30 Catholic Service with Father Terry (CR) Fill Your Vase and Flower Arranging</p> <p>Afternoon 2pm Anniversary Party with Monroe Wright (L) Coffee Talk</p> <p>Evening Documentaries</p>	<p>13 Happy Anniversary to The Waters of Plymouth!</p> <p>Morning 10:30 Second Hand Hounds (P) 11am Second Hand Hounds (M)</p> <p>Afternoon Current Events This Day in History 2pm Movie</p> <p>Evening Puzzles</p>

Special Events

- August 2nd– Ice Cream Social
- August 3rd– Paint, Paper, Scissors, and Men’s Club
- August 4th– All Resident Meeting, and Music Therapy
- August 5th– Elvis
- August 8th– Hymn Sing and Gerta
- August 10th– Carnival Games
- August 12th– Catholic Service and Water’s Anniversary with Monroe Wright

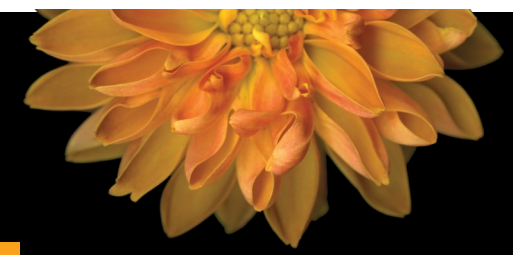
The calendar is subject to change and all residents have a choice in programs and participation.



thrive™



AUGUST SPECIALTY CARE CALENDAR



SUNDAY	MONDAY	TUESDAY	WEDNESDAY	THURSDAY	FRIDAY	SATURDAY
14 Morning Virtual Church Service Afternoon Hymn Sing with Spiritual Eldercare Evening Color Me Calm	15 Morning Coffee Talk (M) Rise and Thrive–Staff Thank You (P) 10:45 Virtual Mass (WBS) Afternoon Craft: Button Painting (P) Coffee, Cookies and Conversation (BP) Evening Documentary	16 Morning Music and Movement (P) Tell a Joke Day (M&P) Picture Frames (P) Afternoon 1:30-3:30pm Dunk Tank-Dunk a Leader Bean Bags (P) Evening 4:30pm Bingo (M) Book Club (P)	17 Morning Rise & Thrive– Bean Bags (P) Manicures and Hand Massages (M&P) Afternoon 1pm Rosary (WBS) 2pm Travel Club to South Africa (CR) Dice Game (P) Evening Movie Night	18 Morning Coffee Talk (M) Rise and Thrive–Drumming (P) 11am Music Therapy (M) Afternoon Social Hour–South Africa 3pm Devotions (PDR) Evening Classic TV	19 Morning Rise and Thrive (P) Fill Your Vase (WBS) Afternoon Card Games and Trivia (M&P) Coffee Talk (M) Evening Documentaries	20 Morning Morning Greetings 10:30 Second Hand Hounds (P) 11am Second Hand Hounds (M) Afternoon Current Events This Day in History 2pm Movie Evening Puzzles
21 Senior Citizen’s Day! Morning Virtual Church Service Hymn Sing with Spiritual ElderCare Afternoon Musical Trivia Popcorn and a Movie with Maya Evening Color Me Calm	22 Morning Coffee Talk (M) Rise and Thrive with Weekly Updates (P) 10:45 Virtual Catholic Mass (WBS) Afternoon 1:30pm Llama Mama visits (BP) Water Coloring (P) Evening Documentary	23 Morning Music and Movement (P) Crosswords (M) Pascal the Dog visits (M&P) Sing-a-Longs (P) Afternoon Tea Party (P) Coffee Talk and Trivia (M) Evening 4:30pm Bingo (M) Book Club (P)	24 State Fair Starts! Morning Rise and Thrive– Drumming (P) 11am Lutheran Service (CR) Afternoon Chef Dessert Demo (M&P) 1pm Rosary (WBS) State Fair Fun Evening Movie Night	25 Morning Coffee Talk (M) Rise and Thrive (P) Afternoon Social Hour– Cheese Curds 3pm Devotions (PDR) Evening Classic TV	26 Morning Rise and Thrive (P) 10:45am Share Your Life Stories (CR) Afternoon Fill Your Vase and Flower Arranging (WBS) 2:30pm Plymouth Police Dog Demo (L) Evening Documentaries	27 Happy Birthday Sharon J! Morning Morning Greetings 10:30 Second Hand Hounds (P) 11am Second Hand Hounds (M) Afternoon Current Events This Day in History 2pm Movie Evening Puzzles
28 Morning Virtual Church Service Afternoon Hymn Sing with Susie Q Evening Color Me Calm	29 Morning Coffee Talk (M) Rise & Thrive– Updates (P) 10:45 Virtual Catholic Mass (WBS) Afternoon Taste Testing (M&P) Evening Documentary	30 Morning Music and Movement (P) Crosswords (M) Sing-a-Longs Afternoon Water-coloring (P) Game: Higher and Lower (M) Coffee Talk Evening 4:30pm Bingo (M) Book Club (P)	31 Morning Coffee Talk (M) Make Whipped Cream (P) Manicures and Hand Massages (M&P) Afternoon 11:30-1pm Drive Thru BBQ with Plymouth Police 1pm Rosary (WBS) Game Day (P&M) Evening Movie Night			Calendar Key: First Floor L = Lobby BP = Back Patio BL = Back Lobby DC = Dahlia Café (Bistro) WBS = Wellbeing Studio P= Ponds Second Floor CR = Community Room CAS = Creative Arts Studio M= Marsh RR-Registration Required



Special Events

- August 16th– Dunk Tank a Leader
- August 17th– Travel Club
- August 22nd– Llama Mama Visits
- August 23rd– Tea Party
- August 24th– Lutheran Service and Chef Demo
- August 26th– Life Stories and Police K9 visit
- August 29th– Taste Testing
- August 31th– Police BBQ Drive Thru

The calendar is subject to change and all residents have a choice in programs and participation.

