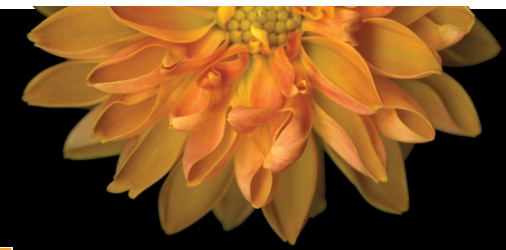




SEPTEMBER 2022 SPECIALTY CARE CALENDAR



| SUNDAY | MONDAY | TUESDAY | WEDNESDAY | THURSDAY | FRIDAY | SATURDAY |
|--|--|---|---|--|--|---|
| | | | | 1 <u>Morning Programs</u> Flower Club Time (P) Rise & Thrive (M) <u>Afternoon Programs</u> Coffee & Conversation: Celebrating Peace (P) Coffee & Conversation: Celebrating Peace / Rosary (M) | 2 <u>Morning Programs</u> Rise & Thrive / Chair Dance (P) Rise & Thrive / Chair Dance (M) <u>Afternoon Programs</u> Sensory Time & Bingo (P) Sensory Time & Bingo (M) Twins baseball: 7:10 | 3 <u>Morning Programs</u> Thrive Activities with the RAs (P) & (M) <u>Afternoon Programs</u> Mid-afternoon social with the RAs (P) & (M) Twins baseball: 6:15 |
| 4 <u>Morning Programs</u> TV Church Service (P) & (M) <u>Afternoon Programs</u> Thrive Activities with RAs (P) & (M) Twins baseball: 1:10 Patio Time / Water Garden as needed | 5 LABOR DAY <u>Morning Programs</u> Thrive Activities with RAs (P) & (M) <u>Afternoon Programs</u> Twins Baseball: 12:05 Patio Time with RAs (P) & (M) | 6 <u>Morning Programs</u> Coffee & Conversation: Labor Day Trivia (P) Rise & Thrive / Labor Day Trivia (M) <u>Afternoon Programs</u> Happy Hour: Reminiscing about School Days (P) Happy Hour: Reminiscing about School Days (M) Twins baseball: 6:05 | 7 <u>Morning Programs</u> Dog Therapy / Music Therapy with Erin (P) Music Therapy with Erin / Sit & Stretch / Dog Therapy (M) <u>Afternoon Programs</u> Small walking group (P) & (M) 3:00 small group to Sister Luv concert & Root Beer Floats in front parking lot Twins baseball: 6:05 | 8 <u>Morning Programs</u> Monday Morning with Marni (M) <u>Afternoon Programs</u> Afternoon Activity with Marni (P) Rosary (M) Twins baseball: 6:05 | 9 <u>Morning Programs</u> Drumming / Sit & Stretch (P) Rise & Thrive (M) <u>Afternoon Programs</u> Bean Bag Toss / Bingo (P) Bean Bag Toss / Bingo (M) Twins baseball: 7:10 | 10 <u>Morning Programs</u> Drumming (P) Rise & Thrive (M) <u>Afternoon Programs</u> Mid-afternoon social with the RAs (P) & (M) Twins baseball: 6:15 |

STAFF
 Mary McCabe, Active Life Manager
 Mary Beth Hanson (Mon—Wed) Active Life Coordinator
 Resident assistants (RA)

LOCATIONS
 (Ponds (P), Marsh (M))

SCHEDULE MON—WED PONDS & MARSH
 Morning programs typically start about 10a.m.
 Afternoon programs typically start about 2p.m.

SCHEDULE THURS—FRI PONDS & MARSH
 Times & activities vary based on staff availability.

Thrive-in-Place Days, Locations and Times vary

GAMES
 Dice games, Cards, Bingo, Name that Tune, Bananagrams, Balloon Fun, Crossword puzzles, Word search and more

CREATIVE CORNER
 Fill Your Vase-Flowers, Crafts, Drawing, Adult Coloring, Painting and more

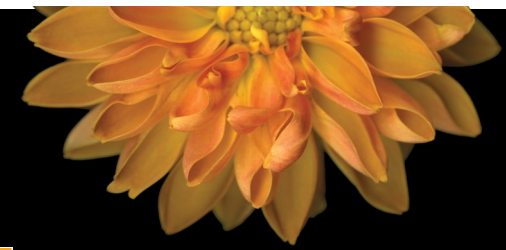
THRIVE ACTIVITIES WITH RESIDENT ASSISTANTS (RA)
 Puzzles, Conversations, Bean bag toss, Pool, Adult Coloring, TV time,

The Calendar is subject to change and all residents have a choice in programs and participation.





SEPTEMBER 2022 SPECIALTY CARE CALENDAR



THE WATERS
ON MAYWOOD™

| SUNDAY | MONDAY | TUESDAY | WEDNESDAY | THURSDAY | FRIDAY | SATURDAY |
|---|---|---|---|---|--|---|
| <p>11</p> <p>Morning Programs TV Church Service (P) & (M)</p> <p>Afternoon Programs <i>Thrive Activities with RA's</i> (P) & (M)</p> <p>Twins baseball: 1:10</p> <p>Patio Time / Water Garden as needed</p> | <p>12</p> <p>Morning Programs Bible Study and Hymn Sing / Intergenerational Time: Baby and Mom visit (P)</p> <p><i>Rise & Thrive / Intergenerational Time: Baby and Mom visit</i> (M)</p> <p>Afternoon Programs Small group walk & Summer Time Out & About Excursion</p> <p>Twins baseball: 6:40</p> | <p>13</p> <p>Morning Programs 10:00 Small group walks on Mayowood property: Alzheimer's Walk (P) & (M)</p> <p>Afternoon Programs Name That Tune / TV shows from the 50's & 60's(P)</p> <p><i>Name That Tune / TV shows from the 50's & 60's</i> (M)</p> <p>Twins baseball: 6:40</p> | <p>14</p> <p>Morning Programs Dog Therapy / Word Games (P)</p> <p><i>Rise & Thrive / Dog Therapy</i> (M)</p> <p>Afternoon Programs Happy Hour: Reminiscing about Rosie The Riveter (P)</p> <p><i>Happy Hour: Reminiscing about Rosie The Riveter</i> (M)</p> <p>Twins baseball: 6:40</p> | <p>15</p> <p>Morning Programs 10:00 <i>Rise & Thrive</i> (M)</p> <p>11:00 Worship with Zumbro Church (P)</p> <p>Afternoon Programs Bingo / Trivia (P)</p> <p><i>Bingo / Rosary</i> (M)</p> <p>Twins baseball: 6:40</p> | <p>16</p> <p>Morning Programs Arts & Crafts: Tin / Aromatherapy (P)</p> <p><i>Arts & Craft: Tin / Aromatherapy</i> (M)</p> <p>Afternoon Programs Thrive Activities with RAs (P) & (M)</p> <p>Twins baseball: 6:10</p> | <p>17</p> <p>Morning Programs Coffee and Conversation: Inventions (P)</p> <p><i>Bible Study</i> (M)</p> <p>Afternoon Programs Twins Baseball: 12:10</p> <p>Sing A Long (P)</p> <p><i>Sing A Long</i> (M)</p> |
| <p>18</p> <p>Morning Programs TV Church Service (P) & (M)</p> <p><i>Rise & Thrive</i> (P)</p> <p><i>Rise & Thrive</i> (M)</p> <p>Afternoon Programs Twins baseball: 12:40</p> <p><i>Thrive Activities with RA's</i> (P) & (M)</p> <p>Patio Time / Water Garden as needed</p> | <p>19</p> <p>Morning Programs Mind your P's and Q's conversation and coffee (P)</p> <p><i>Rise & Thrive / Hymn Sing</i> (M)</p> <p>Afternoon Programs Twins baseball: 12:10</p> <p>Educational : Tickle the Ivories (P)</p> <p><i>Educational: Tickle the Ivories</i> (M)</p> | <p>20</p> <p>Morning Programs Lassie's Birthday! / Trivia (P)</p> <p><i>Lassie's Birthday! / Geography</i> (M)</p> <p>Afternoon Programs Travel Club "The Golden State" (P)</p> <p><i>Travel Club "The Golden State"</i> (M)</p> <p>Twins baseball: 7:10</p> | <p>21 Happy Birthday Twyla!</p> <p>Morning Programs Dog Therapy / Patio Time (P)</p> <p><i>Rise & Thrive / Dog Therapy</i> (M)</p> <p><i>Birthday Celebration</i> (M)</p> <p>Afternoon Programs <i>Conversation with the Chef & Chef Demo / 100th Birthday Party!</i> (M)</p> <p>Toss Games / Trivia</p> <p>Twins baseball: 7:10</p> | <p>22</p> <p>Morning Programs Drumming / Documentary (P)</p> <p><i>Rise & Thrive</i> (M)</p> <p>Afternoon Programs Twins baseball: 1:10</p> <p>Coffee & Conversation: Celebrating Sequoia Trees (P)</p> <p>3:30 <i>Worship with Reverend Laura / Celebrating Sequoias / Rosary</i> (M)</p> | <p>23</p> <p>Morning Programs <i>Rise & Thrive / Geography</i> (P)</p> <p><i>Rise & Thrive</i> (M)</p> <p>Afternoon Programs Culinary Creations: Root Beer Floats / Trivia (P)</p> <p><i>Culinary Creations: Root Beer Floats / Bingo</i> (M)</p> <p>Twins baseball: 7:10</p> | <p>24</p> <p>Morning Programs Thrive Activities with the RAs (P) & (M)</p> <p>Afternoon Programs <i>Mid-afternoon social with the RAs</i> (P) & (M)</p> <p>Twins baseball: 6:10</p> |
| <p>25 Rosh Hashanah</p> <p>Morning Programs TV Church Service (P) & (M)</p> <p>Afternoon Programs <i>Thrive Activities w RAs</i> (P) & (M)</p> <p>Twins baseball : 1:10</p> <p>Patio Time / Water Garden as needed</p> | <p>26 Happy Birthday Jackie!</p> <p>Morning Programs Autumn Art: Nature Painting (P)</p> <p><i>Rise and Thrive / Documentary</i> (M)</p> <p><i>Birthday Celebration</i> (M)</p> <p>Afternoon Programs Small group walk & Summer Time Out & About Excursion</p> | <p>27</p> <p>Morning Programs Culinary Creations: Apple Crisp (P)</p> <p><i>Coffee & Conversation: Gilligan's Island / Rise & Thrive</i> (M)</p> <p>Afternoon Programs "The Price is Right" & Happy Hour (P)</p> <p><i>"The Price is Right" & Happy Hour</i> (M)</p> <p>Twins baseball: 6:40</p> | <p>28</p> <p>Morning Programs Dog Therapy / Games (P)</p> <p><i>Rise & Thrive / Dog Therapy</i> (M)</p> <p>Afternoon Programs Bingo / Name That Tune / Hand Massage / Aromatherapy (P)</p> <p><i>Autumn Art: Nature Painting / Volleyball with Cate</i> (M)</p> <p>Twins baseball: 6:40</p> | <p>29</p> <p>Morning Programs Drumming / Guess Who (P)</p> <p><i>Rise & Thrive / Guess Who</i> (M)</p> <p>Afternoon Programs Twins Baseball: 12:10</p> <p>2:05 <i>Craig Moton / Rosary</i> (M)</p> <p>3:30ish <i>Craig Morton</i> (P)</p> | <p>30</p> <p>Morning Programs <i>Rise & Thrive / Meditation</i> (P)</p> <p><i>Rise & Thrive / Meditation</i> (M)</p> <p>Afternoon Programs Culinary Creations: Root Beer Floats / Trivia (P)</p> <p><i>Culinary Creations: Root Beer Floats / Bingo</i> (M)</p> <p>Twins baseball: 6:10</p> | <p>8-31 5:56</p> |

STAFF

Mary McCabe,
Active Life Manager

Mary Beth Hanson (Mon—Wed)
Active Life Coordinator

Resident assistants (RA)

LOCATIONS

(Ponds (P), Marsh (M))

SCHEDULE MON—WED

PONDS & MARSH

Morning programs typically start about 10a.m.

Afternoon programs typically start about 2p.m.

SCHEDULE THURS—FRI

PONDS & MARSH

Times & activities vary based on staff availability.

Thrive-in-Place Days, Locations and Times vary

GAMES

Dice games, Cards, Bingo, Name that Tune, Bananagrams, Balloon Fun, Crossword puzzles, Word search and more

CREATIVE CORNER

Fill Your Vase-Flowers, Crafts, Drawing, Adult Coloring, Painting and more

THRIVE ACTIVITIES WITH RESIDENT ASSISTANTS (RA)

Puzzles, Conversations, Bean bag toss, Pool, Adult Coloring, TV time,

The Calendar is subject to change and all residents have a choice in programs and participation. 3-30

