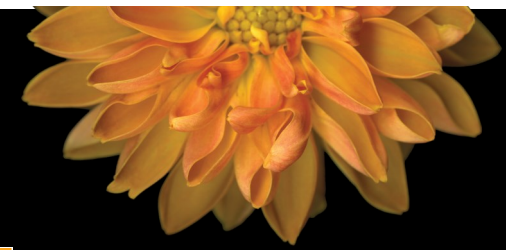




NOVEMBER 2022 SPECIALTY CARE CALENDAR



THE WATERS
ON MAYWOOD™

SUNDAY	MONDAY	TUESDAY	WEDNESDAY	THURSDAY	FRIDAY	SATURDAY
		<p>1</p> <p>Morning Programs Culinary Creations: Let's Make Bread! / Candy Bar Fun! (P)</p> <p>Rise and Thrive / Games (M)</p> <p>Afternoon Programs Happy Hour: Travel Club to the wild west to Celebrate Roy Rogers! (P) Happy Hour: Travel Club to the wild west to Celebrate Roy Rogers! (M)</p>	<p>2</p> <p>Morning Programs Dog Therapy / Word games (P)</p> <p>Rise & Thrive / Dog Therapy (M)</p> <p>Afternoon Programs Patio Time / Bingo (P) Patio Time/ Let's talk about Owls! (M)</p>	<p>3</p> <p>Morning Programs Games or Flower Club (P)</p> <p>Drumming (M)</p> <p>Afternoon Programs 2:00 Let's Celebrate Ray & Mary Ann's 66th Wedding Anniversary! (P) Coffee & Conversation: Pickles! (M)</p>	<p>4 Happy B-day Barb D!</p> <p>Morning Programs Drumming / Meditation (P)</p> <p>Rise & Thrive / Meditation (M) Birthday Celebration (M)</p> <p>Afternoon Programs Aggie's Birthday Celebration / Culinary Creations: Root Beer Floats / Bean Bag toss (P) Culinary Creations: Root Beer Floats / Bingo (M)</p>	<p>5 Happy Birthday Aggie!</p> <p>Morning Programs Thrive Activities with the RAs (P) & (M)</p> <p>Aggie's Birthday Celebration will be Fri mid-afternoon (P)</p> <p>Afternoon Programs Mid-afternoon social with the RAs (P) & (M)</p>
<p>6</p> <p>Morning Programs TV Church Service (P) & (M)</p> <p>Vikings Football: 12:00</p> <p>Afternoon Programs Thrive Activities with RAs (P) & (M)</p>	<p>7</p> <p>Morning Programs Coffee and Reminiscing about Tupperware (P)</p> <p>Rise and Thrive (M)</p> <p>Afternoon Programs Hymn Sing / Name that Tune! (P) Hymn Sing / Name that Tune (M)</p>	<p>8</p> <p>Morning Programs Let's learn about Owls! (P)</p> <p>Let's Play Volleyball! (M)</p> <p>Afternoon Programs Educational program: Remembering JFK (P) Educational program: Remembering JFK (M) 6:00 Rosary (M)</p>	<p>9</p> <p>Morning Programs Dog Therapy (P)</p> <p>Dog Therapy (M)</p> <p>Afternoon Programs Happy Hour: Celebrating Apples / Sensory Time (P) Happy Hour: Celebrating Apples / Sensory Time (M)</p>	<p>10 Happy B-day Mary Ann!</p> <p>Morning Programs Bean Bag Fun with RAs (P)</p> <p>Bean Bags Fun with RAs (M) Birthday Celebration (M)</p> <p>Afternoon Programs 2:30-3:00 Karaoke Fun & Trivia (M) 3:00-3:30 Karaoke Fun & Trivia (P)</p>	<p>11</p> <p>Morning Programs 10:00 Veteran's Day recognition (M)</p> <p>11:00 Remembering Veteran's Day (P)</p> <p>Afternoon Programs Popcorn and Bingo (P) Popcorn & Bingo (M)</p>	<p>12</p> <p>Morning Programs Donuts and Devotions (P)</p> <p>Donuts and Devotions (M)</p> <p>Afternoon Programs Sat afternoon social (P) Sat afternoon social (M)</p>

STAFF

Mary McCabe,
Active Life Manager
Mary Beth Hanson (Mon—Wed)
Active Life Coordinator
Resident assistants (RA)

LOCATIONS

(Ponds (P), Marsh (M))

**SCHEDULE MON—WED
PONDS & MARSH**

Morning programs typically start about 10a.m.
Afternoon programs typically start about 2p.m.

**SCHEDULE THURS—FRI
PONDS & MARSH**

Times & activities vary based on staff availability.

Thrive-in-Place Days, Locations and Times vary

GAMES

Dice games, Cards, Bingo, Name that Tune, Banagrams, Balloon Fun, Crossword puzzles, Word search and more

CREATIVE CORNER

Fill Your Vase-Flowers, Crafts, Drawing, Adult Coloring, Painting and more

**THRIVE ACTIVITIES WITH
RESIDENT ASSISTANTS (RA)**

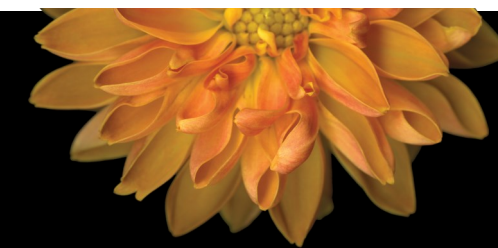
Puzzles, Conversations, Bean bag toss, Pool, Adult Coloring, TV time,

The Calendar is subject to change and all residents have a choice in programs and participation.





NOVEMBER 2022 SPECIALTY CARE CALENDAR



SUNDAY	MONDAY	TUESDAY	WEDNESDAY	THURSDAY	FRIDAY	SATURDAY
<p>13</p> <p>Morning Programs TV Church Service (P) & (M)</p> <p>Afternoon Programs Vikings football: 12:00 Thrive Activities with RA's (P) & (M)</p>	<p>14</p> <p>Morning Programs Coffee and Conversation / Inter-generation visit: Mom & Baby! (P) Jingo Fun with Marni / Inter-generation visit: Mom & Baby! (M)</p> <p>Afternoon Programs Worship with Josh (P) Worship with Josh (M)</p>	<p>15</p> <p>Morning Programs Card Games / Aromatherapy (P) Rise & Thrive / Aromatherapy (M)</p> <p>Afternoon Programs 2:00 Men's Auto parts Reminiscing / trivia (M) 3:00 Ladies Doll Show & Reminiscing (Sunset Dining Room) 6:00 Rosary (M)</p>	<p>16</p> <p>Morning Programs Dog Therapy (P) Dog Therapy (M)</p> <p>Afternoon Programs Karaoke Fun (P) Karaoke Fun (M)</p>	<p>17</p> <p>Morning Programs 11:00 Worship with Zumbro Church (P) 10:00 Rise & Thrive /Sit & Stretch (M)</p> <p>Afternoon Programs 1:45 Happy Hour: Gettysburg Address (P) 2:45 Happy Hour: Gettysburg Address (M)</p>	<p>18</p> <p>Morning Programs Rise & Thrive / Meditation (P) Rise & Thrive / Meditation (M)</p> <p>Afternoon Programs Culinary Creations: Caramel & Apples / Bingo (P) Culinary Creations: Caramel & Apples / Bingo (M)</p>	<p>19</p> <p>Morning Programs Puzzles & Donut Time ((P) Drumming & Donuts (M)</p> <p>Afternoon Programs Mid-afternoon social with the RAs (P) & (M)</p>
<p>20</p> <p>Morning Programs TV Church Service (P) & (M)</p> <p>Afternoon Programs Vikings football: 3:25 Thrive Activities with RA's (P) & (M)</p>	<p>21</p> <p>Morning Programs Rise and Thrive (P) Rise & Thrive (M)</p> <p>Afternoon Programs Family Feud Game (P) Family Feud Game (M)</p>	<p>22</p> <p>Morning Programs Let's bake biscuits! Coffee and Conversation: "Cooking the Thanksgiving meal" (P) Drumming / Games (M)</p> <p>Afternoon Programs Happy Hour: Seasonal Celebrations - Thanksgiving Gratitude Craft (P) Happy Hour: Seasonal Celebrations - Thanksgiving Gratitude Craft (M) 6:00 Rosary (M)</p>	<p>23</p> <p>Morning Programs Dog Therapy (P) Dog Therapy (M)</p> <p>Afternoon Programs Name that Tune / Giant Jenga (P) Let's play volleyball! / Name that Tune (M)</p>	<p>24 HAPPY THANKSGIVING!</p> <p>Morning Programs Movie Time with the RAs (P) & (M)</p> <p>Afternoon Programs Mid-afternoon social with the RAs (P) & (M) Vikings football: 7:20</p>	<p>25</p> <p>Morning Programs Rise & Thrive / Chair Dancing (P) Rise & Thrive /Chair Dancing (M)</p> <p>Afternoon Programs Culinary Creations: Root Beer Floats / Bingo (P) Culinary Creations: Root Beer Floats / Bingo (M)</p>	<p>26</p> <p>Morning Programs Coffee & Conversation (P) Drumming (M)</p> <p>Afternoon Programs Mid-afternoon social with the RAs (P) & (M)</p>
<p>27</p> <p>Morning Programs TV Church Service (P) & (M)</p> <p>Afternoon Programs Thrive Activities w RAs (P) & (M)</p>	<p>28 Happy Birthday Jan!</p> <p>Morning Programs Hymn Sing/ Coffee and "Mealtime Monday" (P) Coffee & Conversation Reminiscing about Chili / Rise and Thrive (M) Birthday Celebration! (P)</p> <p>Afternoon Programs 2:00 Concert with Guest Performer: Scott Beaumont! (P) & (M) Conversation & Documentary: The Edmond Fitzgerald (P) Sing along / "Mealtime Monday" (M)</p>	<p>29</p> <p>Morning Programs Dice Games / Coffee (P) Rise & Thrive (M)</p> <p>Afternoon Programs World TV Day (P) World TV Day (M) 6:00 Rosary (M)</p>	<p>30</p> <p>Morning Programs Dog Therapy / Music Therapy with Erin (P) Drumming / Dog Therapy (M)</p> <p>Afternoon Programs 3:00 Happy Hour: Norman Rockwell Freedom Paintings (P) 3:45 Happy Hour: Norman Rockwell Freedom Paintings (P)(M)</p>			<p>11-1-22 6:33pm</p>

THE WATERS ON MAYWOOD™

STAFF
Mary McCabe,
Active Life Manager

Mary Beth Hanson (Mon—Wed)
Active Life Coordinator

Resident assistants (RA)

LOCATIONS
(Ponds (P), Marsh (M))
SCHEDULE MON—WED
PONDS & MARSH

Morning programs typically start about 10a.m.

Afternoon programs typically start about 2p.m.

SCHEDULE THURS—FRI
PONDS & MARSH
Times & activities vary based on staff availability.

Thrive-in-Place Days, Locations and Times vary

GAMES
Dice games, Cards, Bingo, Name that Tune, Bananagrams, Balloon Fun, Crossword puzzles, Word search and more

CREATIVE CORNER
Fill Your Vase-Flowers, Crafts, Drawing, Adult Coloring, Painting and more

THRIVE ACTIVITIES WITH RESIDENT ASSISTANTS (RA)
Puzzles, Conversations, Bean bag toss, Pool, Adult Coloring, TV time,

The Calendar is subject to change and all residents have a choice in programs and participation. ³⁻³⁰

