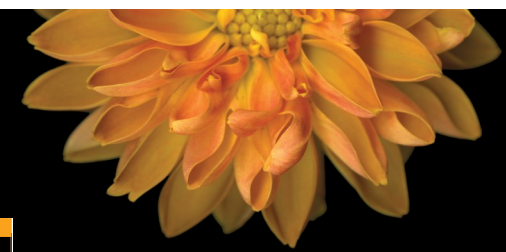




# NOVEMBER SPECIALTY CARE CALENDAR



**THE WATERS**  
OF EDEN PRAIRIE™

SUNDAY	MONDAY	TUESDAY	WEDNESDAY	THURSDAY	FRIDAY	SATURDAY
		<p><b>1</b></p> <p><u>Morning Programs</u></p> <p>Coffee &amp; Conversation / Rise and Thrive (LR)</p> <p>Rise &amp; Thrive / This Day in History (LR)</p> <p>Travel Club: Virtual Tour of "West England" NH</p> <p><u>Afternoon Programs</u></p> <p>Creative Arts: Googly-Eyed Turkeys (LR)</p> <p>Creative Arts: Googly-Eyed Turkeys (LR)</p>	<p><b>2</b></p> <p><u>Morning Programs</u></p> <p>Daily Gratitude / Rise &amp; Thrive (LR)</p> <p>Sing Along to Hymns (LR)</p> <p><u>Afternoon Programs</u></p> <p>Walking Club</p> <p>Pet Therapy Visits with Shadow</p> <p><b>2:30 Music with Geminize (CR)</b></p> <p>6:00 SHH Visits NH</p>	<p><b>3</b></p> <p><u>Morning Programs</u></p> <p>Beauty Shop: Beauty Appointments NH</p> <p>11:00 Rosary Prayer (FL)</p> <p>Puzzles with Friends NH</p> <p><u>Afternoon Programs</u></p> <p>Social Hour (LR)</p> <p>Social Hour (C)</p>	<p><b>4</b></p> <p><u>Morning Programs</u></p> <p><b>9:45 Worship Service w/ Chaplain Rod (LR)</b></p> <p>Daily Gratitude / Rise &amp; Thrive (LR)</p> <p>Sing Along / Karaoke Fun (LR)</p> <p><u>Afternoon Programs</u></p> <p>Bingo (C)</p> <p>Bingo (LR)</p>	<p><b>5 Book Lovers Day!</b></p> <p><u>Morning Programs</u></p> <p>Creative Coloring with Friends NH</p> <p><u>Afternoon Programs</u></p> <p>Puzzles with Friends NH</p> <p>Saturday Matinee: The Three Stooges</p> <p>Meditation / Relaxation</p>
<p><b>Travel Club: England</b></p>						
<p><b>6 Daylight Savings!</b></p> <p><u>Morning Programs</u></p> <p>Live Stream Church Service NH</p> <p><u>Afternoon Programs</u></p> <p>Sunday Football (LR) NH</p> <p>Games with Friends NH</p> <p><b>2:00 Music with Jeff Perry (B)</b></p>	<p><b>7</b></p> <p><u>Morning Programs</u></p> <p><b>10:00 Music with Joan (LR)</b></p> <p>Daily Chronicle / Rise and Thrive (LR)</p> <p>Rise and Thrive / Daily Gratitude (LR)</p> <p><u>Afternoon Programs</u></p> <p>Survey Says—Family Feud Game (LR)</p> <p>Can You See the Big Picture? Game (LR)</p>	<p><b>8 Election Day!</b></p> <p><u>Morning Programs</u></p> <p>Coffee &amp; Conversation / Rise and Thrive (LR)</p> <p>This Day in History / Rise and Thrive (LR)</p> <p>10:45 Catholic Prayer (CR)</p> <p>Travel Club: Virtual Tour of "Southeast England" NH</p> <p><u>Afternoon Programs</u></p> <p><b>2:30 Music with Tom Paquin (CR)</b></p> <p>Creative Arts: Fall Coasters (LR)</p>	<p><b>9</b></p> <p><u>Morning Programs</u></p> <p>Daily Gratitude / Rise and Thrive (LR)</p> <p>Sing Along to Hymns (LR)</p> <p><u>Afternoon Programs</u></p> <p>Walking Club</p> <p>Pet Therapy Visits with Shadow</p> <p>6:00 SHH Visits NH</p>	<p><b>10 National Cupcake Day!</b></p> <p><u>Morning Programs</u></p> <p>Beauty Shop: Beauty Appointments NH</p> <p>11:00 Rosary Prayer (FL)</p> <p>Puzzles with Friends NH</p> <p><u>Afternoon Programs</u></p> <p>Social Hour (LR)</p> <p>Social Hour (C)</p> <p>National Cupcake Day! Decorate Your Own Cupcakes NH</p>	<p><b>11 Veteran's Day!</b></p> <p><b>Wear Red, White, and Blue!</b></p> <p><b>9:45 Worship Service w/ Chaplain Rod (LR)</b></p> <p>Veteran's Luncheon</p> <p>Veteran's Day Celebration (C)</p>	<p><b>12</b></p> <p><u>Morning Programs</u></p> <p>Creative Coloring with Friends NH</p> <p><u>Afternoon Programs</u></p> <p>Puzzles with Friends NH</p> <p>Saturday Matinee: The Andy Griffith Show</p> <p>Meditation / Relaxation</p>

**Locations:**

- CR—Community Room
- B—Bistro
- FL—Fireside Lounge
- Rose Court Neighborhood:
- LR—Living Room
- WBS—Wellbeing Studio
- C—Café
- P—Patio
- Willows Neighborhood:
- LR—Living Room
- P—Patio
- NH—Will occur in both Neighborhoods

\*Signature Thrive Carts are available every day

Regardless of location of group, all residents are invited to all groups of interest.

Morning Programs typically start at 10am. Afternoon programs typically start at 2pm.

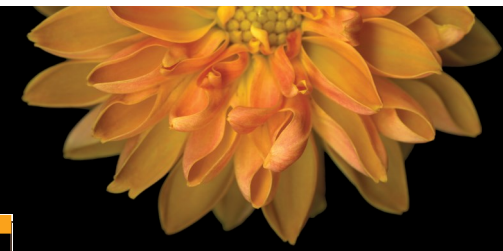
The Calendar is subject to change and all residents have a choice in programs and participation.



**thrive™**



# NOVEMBER SPECIALTY CARE CALENDAR



**THE WATERS**  
OF EDEN PRAIRIE™

SUNDAY	MONDAY	TUESDAY	WEDNESDAY	THURSDAY	FRIDAY	SATURDAY
<p><b>13 World Kindness Day!</b> Morning Programs Live Stream Church Service <b>NH</b> Afternoon Programs Sunday Football (LR) <b>NH</b> <b>2:00 Music with Wes Miller (B)</b> Games with Friends <b>NH</b> Aromatherapy</p>	<p><b>14</b> Morning Programs <b>10:00 Music with Joan (LR)</b> Daily Chronicle / Rise and Thrive (LR) Rise &amp; Thrive / Daily Gratitude (LR) Afternoon Programs Culinary Creations: Root Beer Floats <b>NH</b> Cornhole Game <b>NH</b></p>	<p><b>15</b> Morning Programs Coffee and Conversation / Rise and Thrive (LR) Rise &amp; Thrive (LR) Travel Club: Virtual Tour of "England's Cornwall" <b>NH</b> Afternoon Programs Creative Arts: Fall Corn Painting (LR) Creative Arts: Fall Corn Craft (C)</p>	<p><b>16</b> Morning Programs Daily Gratitude / Rise and Thrive (LR) Sing Along to Hymns (LR) Afternoon Programs Walking Club Pet Therapy Visits with Shadow Wordscapes (LR) 6:00 SHH Visits <b>NH</b></p>	<p><b>17</b> Morning Programs Beauty Shop: Beauty Appointments <b>NH</b> 11:00 Rosary Prayer (FL) Puzzles with Friends <b>NH</b> Afternoon Programs <b>2:00 Music with High Hats (CR)</b> Social Hour (C)</p>	<p><b>18 Apple Cider Day!</b> Morning Programs <b>9:45 Worship Service w/ Chaplain Rod (LR)</b> Daily Gratitude / Rise &amp; Thrive (LR) Sing Along / Karaoke Fun (LR) Afternoon Programs Bingo / Apple Cider (C) Bingo / Apple Cider (LR)</p>	<p><b>19 International Men's Day!</b> Morning Programs Creative Coloring with Friends <b>NH</b> Afternoon Programs Puzzles with Friends <b>NH</b> Saturday Matinee: W.C. Fields Meditation / Relaxation</p>
<p><b>20</b> Morning Programs Live Stream Church Service <b>NH</b> Afternoon Programs Sunday Football (LR) <b>NH</b> Games with Friends <b>NH</b> Aromatherapy</p>	<p><b>21</b> Morning Programs <b>10:00 Music with Joan (LR)</b> Daily Chronicle / Rise and Thrive (LR) Rise &amp; Thrive / Daily Gratitude (LR) Afternoon Programs Geography / States (C) Last Word Game (LR)</p>	<p><b>22</b> Morning Programs Coffee and Conversation / Rise and Thrive (LR) 10:45 Catholic Mass (CR) Travel Club: Virtual Tour of "North England" <b>NH</b> Afternoon Programs <b>2:30 Music with Liya (CR)</b> Creative Arts: Pinecone Turkeys (LR)</p>	<p><b>23 National Jukebox Day!</b> Morning Programs Daily Gratitude / Rise and Thrive (LR) Sing Along to Hymns (LR) Afternoon Programs Walking Club Pet Therapy Visits with Shadow Mini Golf (LR) 6:00 SHH Visits <b>NH</b></p>	<p><b>24</b> <b>Happy Thanksgiving!</b> Pretty Nails and 1:1's <b>NH</b> Thanksgiving Bingo <b>NH</b></p>	<p><b>25</b> Morning Programs <b>9:45 Worship Service w/ Chaplain Rod (LR)</b> Daily Gratitude / Rise &amp; Thrive (LR) Sing Along / Karaoke Fun (LR) Afternoon Programs Monthly Birthday Party / Happy Hour (November) (C)</p>	<p><b>26</b> Morning Programs Creative Coloring with Friends <b>NH</b> Afternoon Programs Puzzles with Friends <b>NH</b> Saturday Matinee: Bob Hope Meditation / Relaxation</p>
<p><b>27</b> Morning Programs Live Stream Church Service <b>NH</b> Afternoon Programs Sunday Football (LR) <b>NH</b> Games with Friends <b>NH</b> Aromatherapy</p>	<p><b>28</b> Morning Programs <b>10:00 Music with Joan (LR)</b> Creative Coloring with Friends <b>NH</b> Daily Gratitude (LR) Afternoon Programs Walking Club Red Skeleton Marathon <b>NH</b></p>	<p><b>29</b> Morning Programs Rise and Thrive (LR) Balloon Toss / This Day in History (LR) Travel Club: Virtual Tour of "The Heart of England" <b>NH</b> Afternoon Programs Culinary Creations: Sundae Social <b>NH</b> Wii Bowling (LR)</p>	<p><b>30</b> Morning Programs Daily Gratitude / Rise and Thrive (LR) Sing Along to Hymns (LR) Afternoon Programs Pet Therapy Visits with Shadow Bowling (LR) Aromatherapy and Hand Massages (LR) 6:00 SHH Visits <b>NH</b></p>			

**Locations:**  
CR—Community Room  
B—Bistro  
FL—Fireside Lounge  
Rose Court Neighborhood:  
LR—Living Room  
WBS—Wellbeing Studio  
C—Café  
P—Patio  
Willows Neighborhood:  
LR—Living Room  
P—Patio  
**NH**—Will occur in both Neighborhoods  
\*Signature Thrive Carts are available every day  
**Regardless of location of group, all residents are invited to all groups of interest.**  
**Morning Programs typically start at 10am. Afternoon programs typically start at 10am.**  
The Calendar is subject to change and all residents have a choice in programs and participation.

